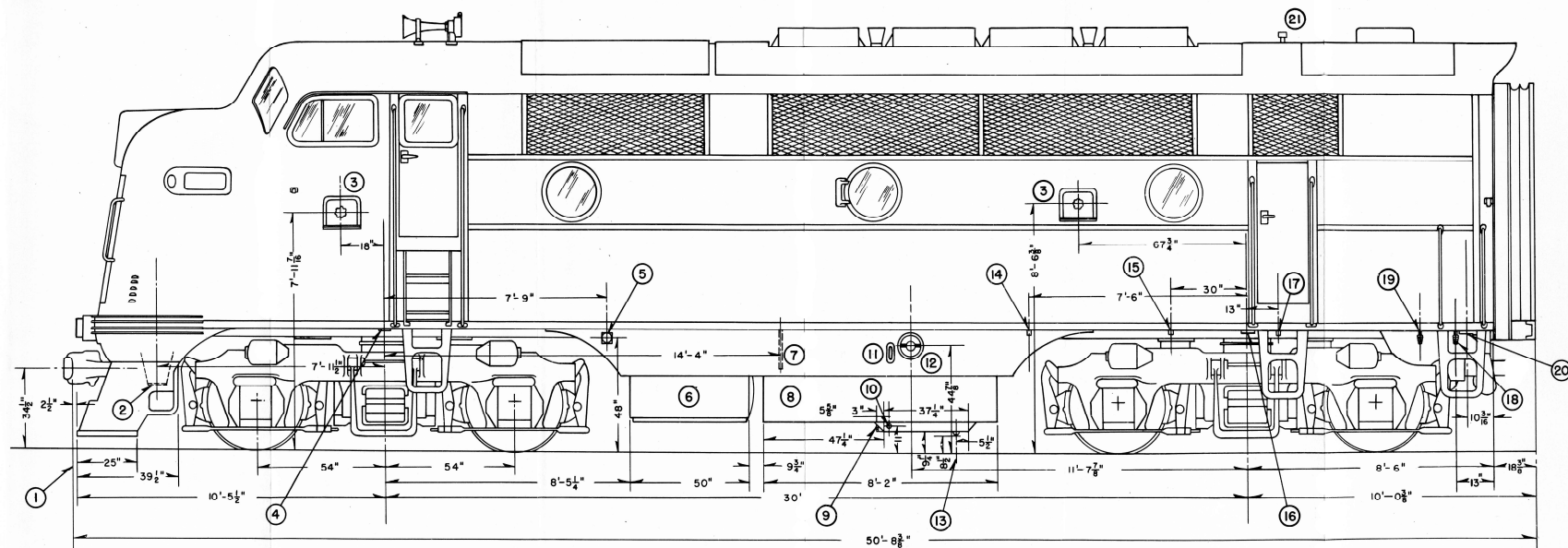


1. Pulling Face of Front Coupler.
2. Blocking Pads—both sides under pilot.
3. Sand Box Fillers—two on each side of car.
4. Jacking and Blocking Pads—both sides No.1 bolster under carbody.
5. Battery Charging Receptacle—left side only.
6. Battery Box—both sides under carbody.
7. Engine Air Box Drain—both sides under carbody, valves at each side of engine under oil pan handhole covers No. 7 and 15.
8. Fuel Tank—under carbody.
9. Fuel Tank Water Drain Valve—both sides in tank sump.
10. Fuel Tank Sump Drain Plug—in tank sump.
11. Fuel Gauge—both sides in side skirt.
12. Fuel Filler—both sides in side skirt.
13. Fuel Tank Drain Plug—in bottom of tank sump.
14. Engine Sump Oil Drain—left side, valve and drain under carbody.
15. Engine Water Drain—under carbody, valve inside carbody.
16. Jacking and Blocking Pads—both sides No. 2 bolster under carbody.
17. Engine Oil Strainer Drain—left side under carbody, valve inside carbody.
18. Engine Water Filler—both sides under carbody at rear of car.
19. Steam Generator Water Tank Filler (200 and 300 gal. tanks)—both sides under carbody at rear of car.
20. Blocking Pads—both sides under carbody at rear of car.
21. Engine Roof Water Filler—on roof of car above engine cooling water tank.



Dimensions, Drains and Fillers—"A" Unit